

Product Catalog



Energy Meter

Data Logger

Web Server

Energy Meters

The eGauge combines an energy meter, data logger, and web server. This powerful combination lets you measure, store, and retrieve data directly from a local network or from a remote location via the Internet. Not only does it calculate power (V, A, VAR, kWh, etc), but also records data from optional sensors that assess flow rate, temperature, wind speed, and more. You can view historical and live data for the lifetime of the hardware with the unit's convenient user interface (UI). Users have access to real-time values, long-term reports, an interactive graphical interface, and many other tools. The best part is that you pay nothing for the user interface because you retrieve data directly from your own eGauge hardware, not a cloud or 3rd party host. All eGauges are made locally in Boulder, CO.



	eGauge Pro	eGauge Core	eGauge Lite*
Model Number	EG4130	EG4115	EG4105
Applications	Commercial/Residential	Commercial/Residential	Residential
Sensor Ports	30	15	5
AC Voltage	1-3 Lines	1-3 Lines	1-3 Lines
DC Voltage	Yes	Yes	No
Renewable Energy Production	Yes	Yes	Yes
Data Logger	64 Data Points, Lifetime	64 Data Points, Lifetime	32 Data Points, Lifetime
Embedded Server	Yes	Yes	Yes
Accuracy Compliance	+/-0.5% ANSI C12.20	+/-0.5% ANSI C12.20	+/-1% ANSI C12.1
Ethernet	Yes	Yes	No
HomePlug (PLC)	Yes	Yes	Yes
WiFi	Optional	Optional	No
Cellular	Optional	Optional	No
XML API	Published	Published	Published
Modbus	Yes	Yes	Yes
BACnet	Yes	Yes	Yes

* **eGauge Lite** is sold as a package that includes: (1) eGauge Lite, (1) HomePlug AV Adapter, (1) 50A 10mm CT, (2) 100A 16mm CTs, and (1) Power Whip

Phone: 877-342-8431 x1 Email: s

174 Roland-Jeanneau. Montréal. QC. H3E 1R4
T. (514) 768-7676 F. (514) 765-7474
info@ddins.com www.ddins.com

Current Transformers



**DOMINIC DROLET
INSTRUMENTATION**

AC Split-core

Split-core CTs from J&D Sensing offer a well-constructed hinged body and are accurate to +/-1% from 1%-100% of their stated current rating. The quantity of physical size options allow for a flexible installation. Each CT size has a hinge and clipping mechanism, making it easy to close the CT in tight situations.



SKU	Amperage Options	Amperage Range	Accuracy	Inner Dia.	Outer Dia.	COO
JD-SCT-010-xxx	50A, 75A	1%-100%	+/- 1%	10mm (0.39") Round	40.5mm x 23.7mm x 26.6mm (1.6" x 0.93" x 1.05")	KR
JD-SCT-016-xxx	50A, 100A	1%-100%	+/- 1%	16mm (0.62") Round	45mm x 30mm x 31.6mm (1.77" x 1.18" x 1.24")	KR
JD-SCT-024-xxx	100A, 200A	1%-100%	+/- 1%	24mm (0.94") Round	65mm x 45mm x 33.7mm (2.56" x 1.77" x 1.33")	KR
JD-SCT-036-xxx	400A, 600A	1%-100%	+/- 1%	36mm (1.42") Round	82.4mm x 57.1mm x 40.2mm (3.24" x 2.25" x 1.58")	KR

High Accuracy AC Split-core

The Accu-CT revenue grade, split-core current transformer offers outstanding linearity and very low phase angle error with easy one-handed opening and closing, even wearing gloves. The standard Accu-CT meets IEEE C57.13 class 1.2 and when ordered option C0.6 it meets class 0.6 accuracy standards. Only Opt. C0.6 models are available for purchase.



SKU	Amperage Options	Amperage Range	Accuracy	Inner Dia.	Outer Dia.	COO
CC-ACT-020-xxxx	50A, 100A, 200A, 250A	1%-100%	+/- 0.5%	20mm (0.78") Square	61mm x 60.5mm (2.4" x 2.38") Rectangle	US
CC-ACT-032-xxxx	250A, 400A, 600A	1%-100%	+/- 0.5%	46.5mm x 32.0mm (1.83" x 1.26") Round	114.0mm x 63.4mm (4.50" x 3.30") Round	US

Current Transformers Continue on Next Page --->

174 Roland-Jeanneau. Montréal. QC. H3E 1R4
T. (514) 768-7676 F. (514) 765-7474
info@ddins.com www.ddins.com

842-8431 x1 Email: sales@egauge.net

Large AC Split-core

Large Magnelab 50.8mm/2.00” AC split-core current transformers (CTs) allow for easy measurement of individual conductors inside an electrical distribution panel. Each CT can be “split” and attached without disconnecting a conductor from its respective breaker. These CTs are available in a wide variety of amperage ratings.



SKU	Amperage Options	Amperage Range	Accuracy	Inner Dia.	Outer Dia.	COO
ML-SCT-050-xxxx	200A, 400A, 600A, 800A, 1000A, 1200A	10%-100%	+/- 1%	50.8mm (2.00”) Square	127mm x 120.65mm (5.0” x 4.75”) Rectangle	US

AC Rogowski Coil (Flexible Rope)

Rope CTs are excellent for bus-bars and large switch-gear applications. Self-powered rope CTs are flexible and easy to install, have a high current rating, and a wide measurement range.



SKU	Self-powered	Amperage Range	Accuracy	Inner Dia.	COO
AE-RCT-106-2775	Yes	20A-2775A	+/- 1%	106mm (4.17”)	CA
AE-RCT-178-2775	Yes	20A-2775A	+/- 1%	178mm (7.01”)	CA
AE-RCT-178-6935	Yes	25A-6935A	+/- 1%	178mm (7.01”)	CA
AE-RCT-271-6935	Yes	50A-6935A	+/- 1%	271mm (10.5”)	CA

DC Solid-core

A current transformer for those focused on high-efficiency DC consumption sources, solid-core DC CTs are typically used for new wiring and permanent installation. To install them, the power must be turned off, the conductor disconnected, and then threaded through the CT window.



SKU	Amperage Options	Amperage Range	Accuracy	Inner Dia.	Outer Dia.	COO
CR-DCT-020-xxxx	10A, 20A, 50A, 150A	10%-100%	+/- 1%	20mm (0.79”) Round	76mm x 83mm (2.99” x 3.27”) Rectangle	US

Accessories

Networking Hardware

Name	SKU	COO
WiFi Kit	AP100TPL	CN



The TP-Link WiFi access point provides direct access to wireless networks and is 802.11 2.4Ghz b/g/n compatible. The access point can be easily mounted to the inside of an enclosure with a heavy-duty Velcro strip (included). The TP-Link can also be mounted inside of any of the eGauge Powered Enclosure Kits (see page 6). Includes: (1) WiFi access point, (1) Antenna, (1) Antenna extension cable, (1) Ethernet cable, (1) power supply, (1) Velcro mounting strip.

Name	SKU	COO
Cellular Kit	CR100MT	TW



Multitech eCell cellular to Ethernet bridge for use with 4G-LTE AT&T/T-Mobile networks. Includes: (1) Cellular router w/antenna, (1) power supply, (1) antenna remote mount, (1) Ethernet cable, (2) DIN rail clips.

Name	SKU	COO
HomePlug AV Adapter	HP200TPL	CN



The HomePlug AV200 power-line adapter uses your home's existing electrical wiring to create a direct connection between your eGauge meter and a home network. This connection requires no additional wiring and you can simply plug the adapter into existing power sockets to instantly establish a networking infrastructure.

Name	SKU	COO
Display Caster	EGDC100	US



The eGauge Display Caster brings the eGauge user interface to any TV, lobby display, or kiosk. It ships with (1) HDMI cable and (1) Micro USB cable. Configuration requires a keyboard and mouse. Once connected, the Display Caster boots directly to an eGauge login screen where you can choose an eGauge device to display. It is optimized to present both normal and sleek kiosk views, and it can display a local or remote eGauge device. Whether you're increasing public awareness of an existing energy project or promoting a new installation, the Display Caster is sure to show off your hard work and achievements.

Accessories Continue on Next Page >

174 Roland-Jeanneau. Montréal. QC. H3E 1R4
T. (514) 768-7676 F. (514) 765-7474
info@ddins.com www.ddins.com

1-8431 x1 **Email:** sales@egauge.net

Data Signal Converters

Name	SKU	COO
USB-RS485 Converter	USB485	US



The eGauge RS485-USB converter is designed for temporary and permanent half-duplex RS485 data applications. The unit includes (1) 1.5' Micro-USB to USB Cable, a three pin connector, and features three screw terminals for data+, data-, and ground, a termination switch to allow for the conversion of data anywhere along the RS485 device chain, and a removable USB cable that increases installation flexibility. In addition, red and green LEDs indicate RX and TX activity. The converter enclosure has two flanges to aid in permanent installations. This robust unit has protection against 600W surge and 15kV static electricity and is certified to FCC and CE standards. Made in the USA.

Name	SKU	COO
RS485 to Ethernet Converter	EA1000	TW



The RS485 to Ethernet Converter is a universal serial device server that enables users to connect Modbus RS485 sensors to the eGauge using a local area network. The BF430 requires a power supply (EA1001, page 8) or a direct +/- 9-30VDC connection for power.

Enclosure Kits

Name	SKU	Enclosure Size	Transformer	COO
120VAC Powered Enclosure Kit	PEK-120	12"x10"x4" Polycarbonate NEMA4	No	US
277VAC Powered Enclosure Kit	PEK-277	14"x12"x6" Polycarbonate NEMA4	PT-50VA	



The Powered Enclosure Kit is designed for installation of the eGauge in combination with one of several communication protocol devices. The kit comes with components that complement the eGauge main unit, decreasing installation time and reducing complexity. Included: (1) NEMA4 polycarbonate enclosure, (2) DIN rail pieces, (1) Power distribution block, (1) 120VAC receptacle, (1) Wire set, (1) Mounting Kit. The PEK-277 also includes one PT-50VA. *Shipped Unassembled*

Accessories Continue on Next Page --->

174 Roland-Jeanneau. Montréal. QC. H3E 1R4
T. (514) 768-7676 F. (514) 765-7474
info@ddins.com www.ddins.com

Polycarbonate Enclosures

Name	SKU	Enclosure Size	COO
Integra Hinged Enclosure (NEMA4)	IN-ENC-H-O-100804	10"x8"x4"	US
	IN-ENC-H-O-121004	12"x10"x4"	
	IN-ENC-H-O-141206	14"x12"x6"	



Integra polycarbonate enclosure, hinged and lockable lid, DIN rail and mounting kit included. Key Specifications: Temperature Range = -40 to 265 °F, Flame Rating = UL, 5VA. (Test Spec. UL-94), Outdoor UV Exposure = F1. (Test Spec UL), UL-50/c-UL Type 4X Listed (file #E207562) IP 66 .

eGauge Mounting Hardware

Name	SKU	COO
eGauge Mounting Kit	EG-MOUNT-1	US



The eGauge Mounting Kit includes (1) L-bracket, (1) DIN clip, (7) Mounting Screws. These components give installers the hardware to mount any eGauge Pro, Core, or Lite device to DIN rail in virtually any orientation, or even directly to a wall or other surface.

Potential Transformers

Name	SKU	COO
50VA Potential Transformer	PT-50VA	CN

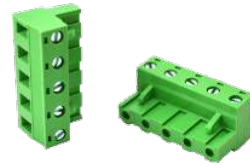


Transformer 50VA, 208/240/277/480-120Vac, dual hub, 2.25A circuit breaker UL Listed.

Accessories Continue on Next Page --->

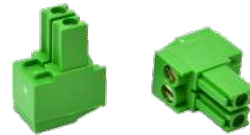
Plugs, Cable, and Other Pieces

Name	SKU	COO
5-Pin Power Plug	POWER-PLUG	TW



Voltage terminal connector block with 5 positions. Accepts three line voltage conductors (L1, L2, and L3) and a neutral conductor. Replacement component for eGauge meters.

Name	SKU	COO
CT Plug	CT-PLUG	IT



Sensor port connector with 2 positions. Accepts one positive and one negative wire. Used to connect AC and DC current transformers to one input position on an eGauge device. Replacement component for eGauge meters.

Name	SKU	Line Color	COO
Power Whip	PW100	Black, Red, Blue, White	US
	PW200	Brown, Orange, Yellow, Gray	



The Power Whip is an installation component used to connect the eGauge meter to a breaker panel. Each Power Whip includes a 5-pin Power Plug and four 8' lengths of THHN #12 stranded copper wire with NEC compliant colors for L1, L2, N, and L3.

Name	SKU	COO
Test Power Cable	TPC100	US



The Test Power Cable is an 8' long extension cable with a 3-prong plug on one end and an epoxy-sealed 5-Pin Power Plug on the other. This product is useful for in-office testing, preliminary configuration, and off-site data exportation. It should not be used for permanent installations.

Name	SKU	COO
12V Power Supply	EA1001	CN



A standard power supply to convert 100-240VAC @ 0.5A (50/60Hz) to +12VDC @ 1A. Called a "switching adapter", this product has a 2-prong US style plug that connects to a wall outlet and a barrel jack for connecting to other hardware. It is UL listed and FCC compliant, with an efficiency level of V.

174 Roland-Jeanneau, Montréal, QC, H3E 1R4
T. (514) 768-7676 F. (514) 765-7474
info@ddins.com www.ddins.com